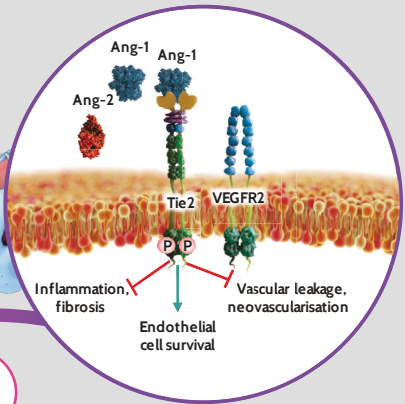
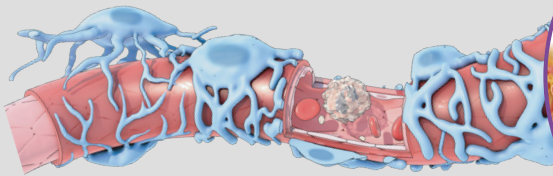


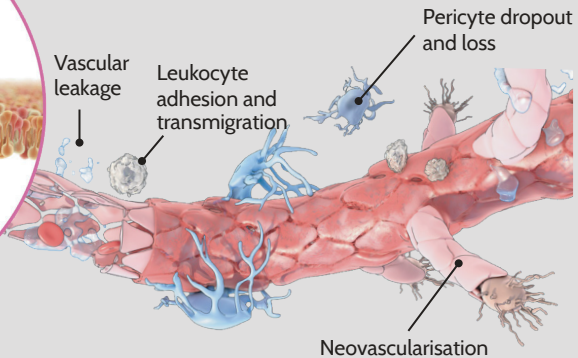
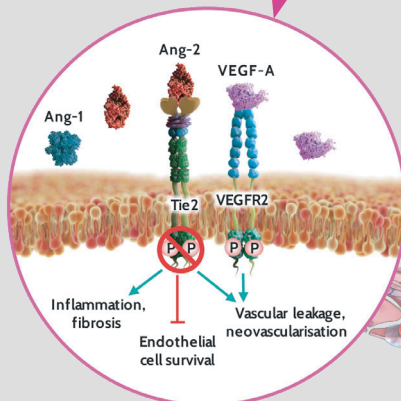
# A CLOSER LOOK AT VASCULAR STABILITY

In healthy vasculature, activation of the Ang-1-Tie2 pathway actively promotes endothelial cells survival and integrity of cell junctions, thereby ensuring vascular stability<sup>1-3</sup>



Pathologic conditions prompting angiogenic switch\*<sup>4</sup>

Ang-2 blocks Tie2 activation and amplifies the effects of pro-inflammatory and pro-angiogenic cytokines, including VEGF-A, synergistically leading to vascular instability: characterised by vascular leakage, neovascularisation, and inflammation<sup>1-3</sup>



Scan the code for more information

\*Conditions of cellular stress, such as irregular glucose concentration, ischaemia, hypoxia, and its effect on growth factors and inflammatory cytokines can induce an angiogenic switch (shift in the balance of pro- and anti-angiogenic factors). Ang, angiotensin; P, phosphorylated; Tie2, tyrosine kinase with immunoglobulin-like domains 2; VEGF-A, vascular endothelial growth factor A; VEGFR2, vascular endothelial growth factor receptor 2

1. Saharinen P, et al. Nat Rev Drug Discov. 2017;16:635-61; 2. Augustin HG, et al. Nat Rev Mol Cell Biol. 2009;10:165-77; 3. Akwii RG, et al. Cells. 2019;8:E471; 4. Clapp C, et al. Physiol Rev. 2009;89:1177-215

The above QR code will redirect you to a website owned by Roche® Global. The information provided in this website is intended for Healthcare Professionals worldwide and may include information about experimental or investigational compounds, products, indications and services that are not approved or valid in Israel. The information is provided for scientific exchange purposes and without any intention to promote or encourage the use of any product and/or in contradiction to any product registration terms. For information relating to any product, please refer to the approved PI published by the Israeli Ministry of Health at <https://israeldrugs.health.gov.il/#!/byDrug>